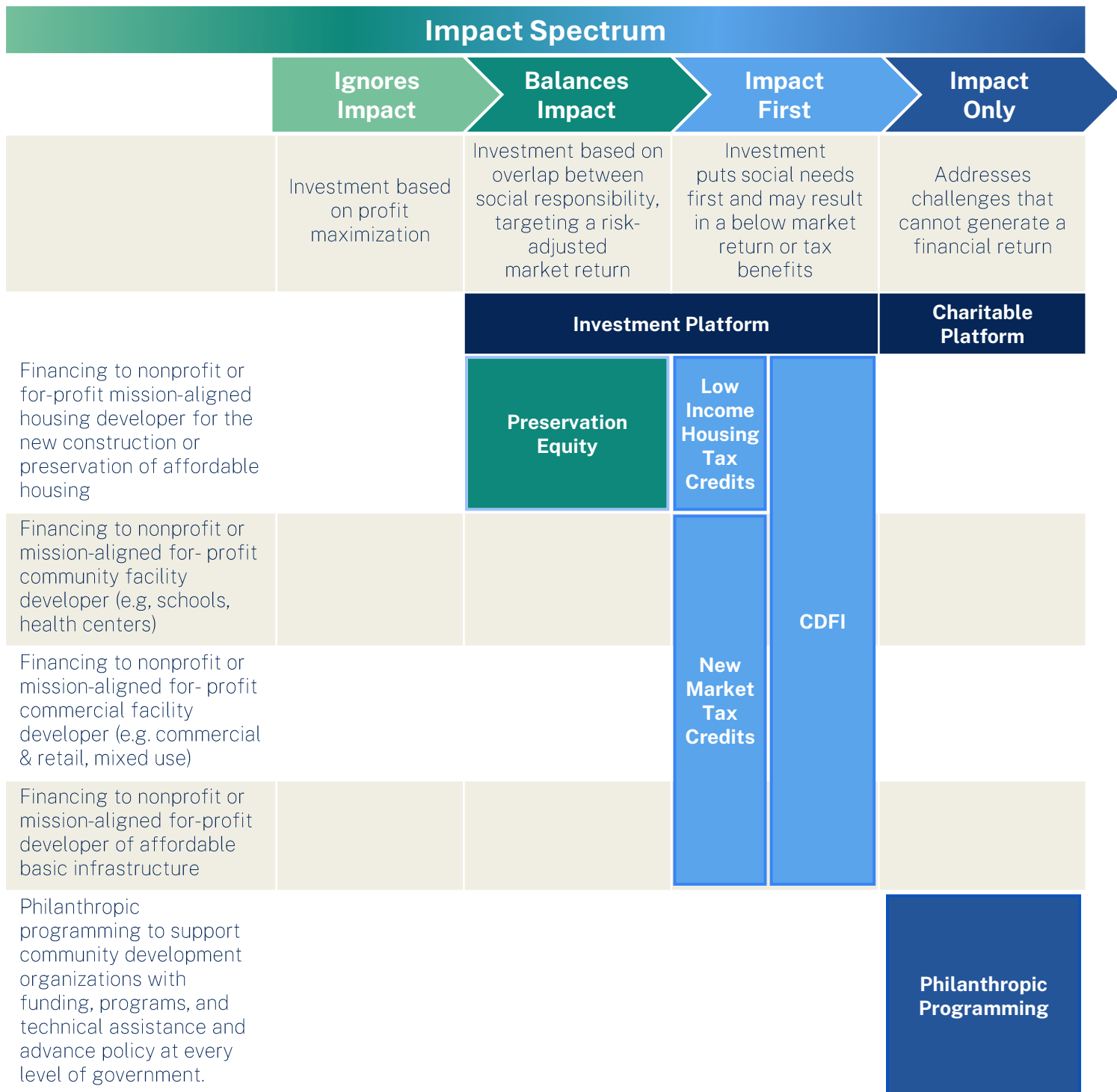


The Enterprise Capital Continuum

Beyond traditional grantmaking, impact investors can support a spectrum of mission-aligned investments, offering catalytic ways to advance both philanthropic and financial goals.



Enterprise Products

Our expertise in equity, tax credit, fixed income and philanthropy combines disciplined strategy with innovation, ensuring your capital works harder and reaches further. *

**Past performance is no guarantee of future results.*

	Individuals	Institutions	Historical Investment Range
PRESERVATION EQUITY			
Fund Equity	 	 	\$250K - \$50MM
Recoverable Grants	 	 	\$25K+
TAX CREDITS			
Low-Income Housing Tax Credit			\$2MM - \$60MM
New Markets Tax Credit			\$5MM - \$25MM
CDFI			
Impact Note ¹	 	 	\$5K - \$25MM
Term Loan, EQ2, Revolving Line, Recoverable Grants		 	\$3MM - \$50MM
PHILANTHROPIC PROGRAMMING			
Donations and Grants			No min

 = Investments

 = Philanthropy

¹The Enterprise Community Impact Notes are unsecured debt securities subject to terms, conditions and risks, described in our prospectus, including the risk of possible loss of the amount invested. Payment is dependent on Enterprise Community Loan Fund's financial condition at the time payment is due. This is not an offer to sell you our securities and we are not soliciting you to buy our securities. We will offer and sell our securities only in states where authorized. The offering is made solely by the prospectus, which should be read before investing. The Enterprise Community Impact Notes are not FDIC or SIPC insured.

Case Studies

HopeWorks Station

Everett, Washington

A four-story, mixed-use Transit Oriented Development with 65 units of permanent supportive affordable housing, tailored resident services, and workforce training facilities.

Enterprise delivered more than \$26M in financing:

- CDFI Loan: \$4.2M
- Low Income Housing Tax Credit: \$13.2M
- New Markets Tax Credit: \$9M
- Section 4 grants: \$303K
- Technical Assistance

93%

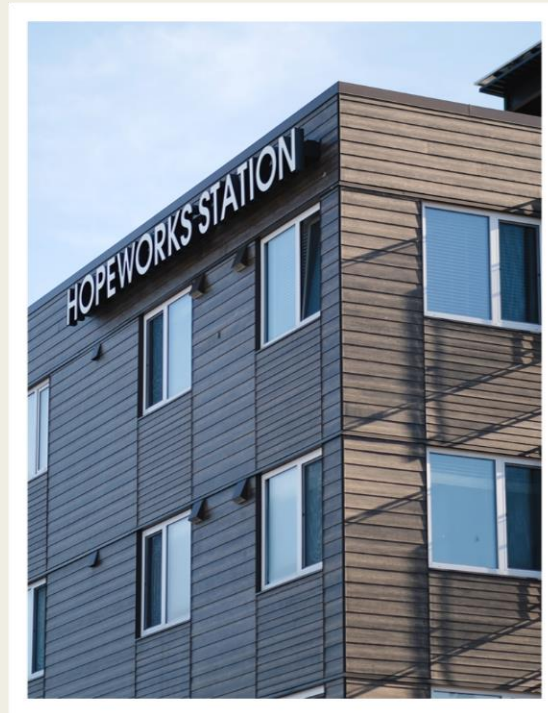
AVERAGE
OCCUPANCY
LEVELS

\$1,490

AVERAGE SAVINGS PER
HOUSEHOLD DUE TO
AFFORDABLE RENT

300+

PARTICIPANTS
IN JOB TRAINING
PROGRAMS



Lake Anne House

Reston, Virginia

Fellowship Square Foundation partnered with Enterprise to replace the dated property with a new affordable apartment complex offering 240 senior housing units.

Enterprise offers community amenities and leads resident services for Lake Anne House, including:

- Wellness clinic with visiting medical professionals
- Exercise as well as arts and crafts classes
- BINGO group for social engagement
- Individual service coordination
- Game room and social hall
- Outdoor terrace with gardening club
- Computer room

#1

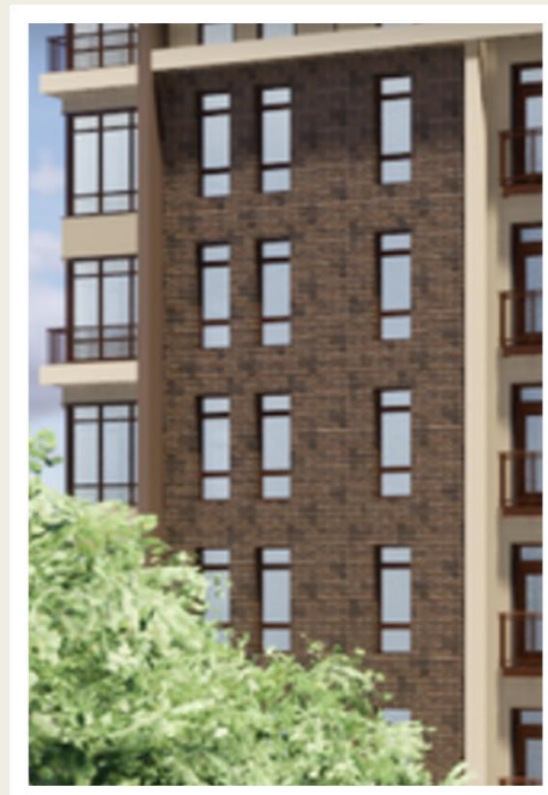
AWARDED "BEST
SENIOR DEVELOPMENT"
BY AFFORDABLE
HOUSING FINANCE

100%

SENIOR
RESIDENTS AT
OR BELOW
60%AMI

240

HOMES
CREATED OR
PRESERVED



Innovation Highlights

Faith-Based Development Initiative

Twenty years of faith-based innovation— leading the field in converting underused land into affordable housing and community assets.

Enterprise is engaging 141+ houses of worship around the country whose project visions have the potential to create 9,000+ affordable homes.

We have helped win important policy changes to support faith-based housing development at the state and local level in California, the District of Columbia, Miami, Montgomery County (Maryland), Seattle and Washington state.

211M

IN LOANS AND
EQUITY PROVIDED

\$6.6M

LEVERAGED IN
GRANTS

1,900

HOMES CREATED
OR PRESERVED



Renter Wealth Creation Fund

Industry-leading fund that turns rent into wealth, helping to change a system that perpetuates the 40x wealth gap between renters and homeowners.

Key features:

Cash back

Every month, residents who make on-time rent payments receive cash back through Stake, a mobile app that allows the transfer and use of these reimbursements

Resident services

Each property will offer services tailored to the needs of the residents, including financial wellness-oriented programming

Shared appreciation

Like homeowners cashing out from a sale, long-term residents— current and former — receive a majority share of the profits if the property is refinanced or sold for a profit



About Enterprise

Enterprise is a national nonprofit that exists to make a good home possible for the millions of families without one. We support community development organizations on the ground, aggregate and invest capital for impact, advance housing policy at every level of government, and build and manage communities ourselves.

Since 1982, we have invested \$80.9 billion and created 1 million homes across all 50 states, the District of Columbia, Puerto Rico and the U.S. Virgin Islands – all to make home and community places of pride, power and belonging.

Our Industry-leading Investment Platform

Enterprise Community Loan Fund

Among the largest national U.S. Treasury-certified Community Development Financial Institutions (CDFIs).

\$3.1B
INVESTED

149K
AFFORDABLE
HOMES

592K
HEALTHCARE VISITS
FACILITATED

20K
SCHOOL SEATS
CREATED

Real Estate Equity

One of the country's original and largest investors in existing subsidized and unsubsidized affordable housing funds.

\$3B
INVESTED

22K
AFFORDABLE
HOMES

143
COMMUNITIES IN
25 STATES

Housing Credit Investments

One of the country's largest, most mature syndicators.

\$22.2B
INVESTED

208K
AFFORDABLE
HOMES

2.8K
DEVELOPMENTS

50
STATES
& DC

New Markets Tax Credits

Second largest allocatee in the country; U.S.

\$1.1B
INVESTED

108
DEVELOPMENTS

2M+
LOW-INCOME
PEOPLE SERVED

37.8K
JOBS CREATED

DISCLAIMER: The material provided herein is for information purposes only. It does not constitute an offer to sell, a solicitation of any offer to buy, or a recommendation of any securities, products or services by any Enterprise-affiliated entity. Any securities offering will be made only in accordance with the terms and conditions set forth in the offering documentation, with complete terms and conditions including applicable risk factors, and should be read before investing. Investments in securities are subject to risks of loss, including a total loss of principal. Past performance and impact achievements do not guarantee future results.