



# A Clarion Call

Reimagining  
Faith-Owned  
Properties  
Post-Pandemic



Faith-Based  
Development Initiative

# Today's Guest Speakers

Pastor Gilford T. Monroe

*Executive Director / Faith Advisor,*

*Office for Faith-Based and Community Partnerships, Office of the Mayor of New York City*

Rev. Kim Council

*Assistant Pastor, Greater Mount Pleasant Baptist Church*

*Former President, East Brooklyn Housing Development Corp*

Ahmed Tigani

*Deputy Commissioner, NYC Department of Housing Preservation and Development*

Lisa Wright and Harmon Moats

*Elders of St. Augustine Presbyterian Church*



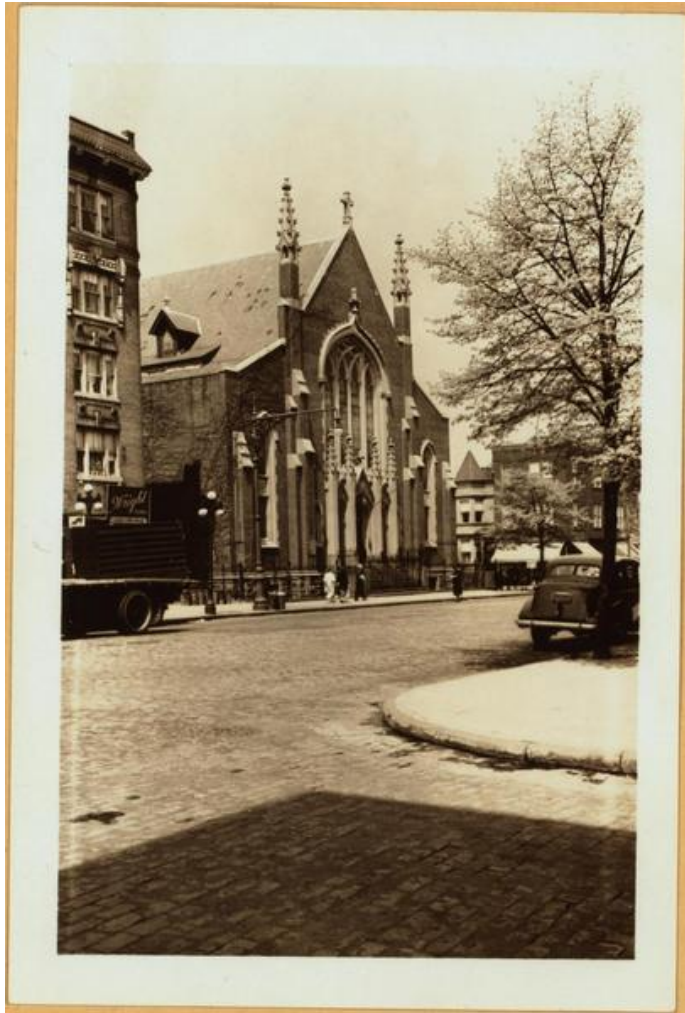
# **Lisa Wright and Harmon Moats**

**Elders of St. Augustine Presbyterian Church**

Navigating development options and crafting a vision:

St. Augustine's experience





Woodstock Presbyterian Church  
Built in 1906



St. Augustine Presbyterian Church  
Present Day

"See, I am doing a new thing!

Now it springs up; do you not perceive it?

I am making a way in the wilderness and streams in the wasteland."

~ Isaiah 43:19



St. Augustine Presbyterian Church  
1938

## Our advice to faith organizations thinking about development:

- Many houses of worship are decades old and their function can be reimagined.
- Mission to vision can be years in the making.
- Commitment is necessary – regular meetings, long hours, facing challenges and emergencies along the way.
- Learning how to use technology and effective documentation is a must.
- All levels of your organization should have knowledge of your project and be updated on it regularly.
- It's worth it!

# The Faith-Based Development Initiative: What we offer

## **Technical Assistance**

Meet with you, order property reports and studies, make and discuss recommendations

## **Training**

Share and discuss information on affordable housing development process

## **Tools**

Guides and visuals to explain the process

## **Access to Experts**

Connect you to mission-aligned professionals

## **Grants**

Recoverable grants to absorb some of the costs you face during early feasibility and predevelopment



# Learn more, get in touch, and apply

**Meet us at our next event on June 9.** You will get to know our team and hear how a faith-based organization receives support from this initiative.

**Applications are due by June 30.** Materials and application instructions will be sent via email.

## Contact us with any questions.

- Kingdom Faith Developers
  - Reverend Kermitt Williams – [kingdomfaithdevelopers@gmail.com](mailto:kingdomfaithdevelopers@gmail.com), (718) 578-8046
  - Celeste Morris – (917) 548-5243
- Enterprise Community Partners
  - Betty Fong - [bfong@enterprisecommunity.org](mailto:bfong@enterprisecommunity.org), (212) 281-7107

