



# BENCHMARKING

## EXERCISE 1:

### BENCHMARKING ENERGY USE

#### GOAL

To understand what benchmarking tells us about energy use.

#### DIRECTIONS

Review the benchmarking slides. Discuss which buildings are using the most energy, what might be contributing to high energy use, what the property owner might do to investigate and reduce energy use.

### Group 1

#### Group 1: Benchmarking Exercises

Each group looks at their benchmarking output & asks:

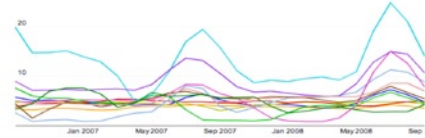
- What can I tell about these apartments?
- What else do I want to know or investigate?
- What actions might I take?
- What if anything could be misleading in the data output?

#### Group 1: Results for 1 Apartment Building Located in Cambridge, MA

Electric use in kWh per bedroom

View: Electricity use (E) in units of (kWh/E) per (bedroom) (E) for (most recent 2 years) (E)

change display mode add to dashboard click and drag to zoom in



Legend: click labels to toggle display

APARTMENT UTILITY ACCOUNTS

Apt. #101 Electric (P2...	Apt. #102 Electric (P2...	Apt. #103 Electric (P2...
Apt. #201 Electric (P2...	Apt. #202 Electric (P2...	Apt. #203 Electric (P2...
Apt. #301 Electric (P2...	Apt. #302 Electric (P2...	Apt. #303 Electric (P2...
Apt. #304 Electric (P2...	Apt. #G01 Electric (P2...	Apt. #G02 Electric (P2...

### Group 2

#### Group 2: Benchmarking Exercises

Each group looks at their benchmarking output & asks:

- What can I tell about this portfolio?
- What else do I want to know or investigate?
- What actions might I take?
- What if anything could be misleading in the data output?

#### Group 2: Portfolio of Buildings in Boston, MA

Developments

Tasks

Developments

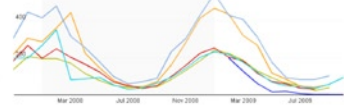
Owned by other users:

CRS

Natural gas use in Btu per square foot (daily)

View: Natural gas use (N) in units of (Btu) per (square foot) (D) for (most recent 2 years) (E)

change display mode add to dashboard click and drag to zoom in



Legend: click labels to toggle display

100 The St...	100 The St...	100 The St...
100 The St...	100 The St...	100 The St...
100 The St...	100 The St...	100 The St...
100 The St...	100 The St...	100 The St...