

## When it comes to building healthy, strong communities, every home and every dollar count.

Since 1982, Enterprise has raised and invested more than \$10 billion to help finance more than 250,000 affordable homes across the United States. Our award-winning Enterprise Green Communities initiative offers the only national framework for green affordable housing – and inspires us to achieve sustainability across all of our activities and operations.

The current economic, energy and environmental challenges demand greater investment in affordable housing and healthy communities. Enterprise is leading the way, with a strong national voice and a driving strategy that will build – and rebuild – diverse, thriving communities for generations to come.



## Our Strategic Goals

Enterprise remains financially sound and steady – and committed to bringing the resources, expertise and advocacy necessary to meet the nation’s most urgent affordable housing and community development priorities. Our success reflects a unique focus that blends social mission and financial innovation.



### Connecting Capital to Communities

Enterprise puts capital to work in communities from coast to coast. We offer a unique breadth of knowledge, expertise and financial products that yield both social and economic returns. Our team of experts continues to strengthen and expand the range and reach of these vital tools.



### Innovating Solutions for Communities

A history of innovation drives Enterprise’s approach. From the Low-Income Housing and New Markets Tax Credit programs to the next generation of our Enterprise Green Communities initiative, Enterprise helps shape, introduce and take to scale the solutions that create, preserve and transform communities nationwide.



### Transforming Policy for Long-Term Change

Good policy is key to successful communities. Enterprise is a trusted advisor at the local, state and federal levels, advocating bold policy priorities. We spur investment in affordable housing and community development by mobilizing the grassroots and injecting new thought leadership.

## Every Story Counts

Together with our network of partners, Enterprise is addressing the most critical housing needs and making dreams come true for people across the United States.



### Creating and Preserving

#### **Affordable Homes:**

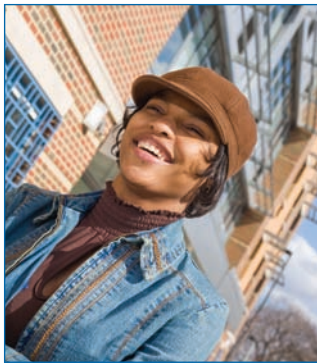
Foreclosure was unimaginable seven years ago, when Sandra and Sam Rosario put a down payment on their modest three-bedroom home in Cleveland's Detroit Shoreway neighborhood. But soon after Sandra lost her customer service

job and the economy hit Sam's construction business hard, the family of four could no longer meet their mortgage payments. In 2008, Enterprise led the Save America's Neighborhoods campaign, securing nearly \$4 billion in federal funds to help families

and communities at risk of foreclosure. A local organization, one of about a hundred Enterprise partners across the country tackling the current housing crisis, helped modify the Rosarios' loan, so the tight-knit family could afford their payments, now and in the future. Says Sandra: "We worked hard for our home, and keeping it means everything."

### OUR MISSION

At Enterprise, we create opportunity for low- and moderate-income people through fit, affordable housing and diverse, thriving communities.



### Delivering Health, Economic and Environmental Benefits:

Two years ago, Precious Moore believed that living in a shelter was her only option. Today, she has an affordable home at Dinkins Gardens, created with the support of Enterprise's \$8 million tax credit investment and \$50,000 Enterprise Green Communities grant. Her efficiency is one of 25 homes that the 83-unit green development reserves for young adults who have been homeless or aged out of foster care. And it's one of the homes made possible by Enterprise's successful Billion Dollar Promise to New York City – 16,000 homes for 50,000 New Yorkers in five years. Precious now has the foundation she needed to enroll in an on-site career program and explore college options. Hope twinkling in her eyes, she says: "I'd like to study social work so I can help young people."

### Expanding Housing Opportunities for the Most Vulnerable:

"I've had a hard life," says Brian Whitten flatly. "Lots of ups and downs. But this," he pauses, brightening, "it's different." In 2008, Brian moved into the Essex, a green affordable apartment building in San Francisco. Made possible by more than \$8 million in tax credit equity and a \$50,000 green grant, both from Enterprise, the Essex gives homeless individuals with disabilities the chance to rebuild their lives. Brian's trouble with addiction led to bouts of incarceration and long-term homelessness starting when he was a teenager. Now 52, he is seeking employment and planning to set roots with his fiancée, Karen. In Los Angeles and the San Francisco Bay area, Enterprise's new California Green Equity Fund will help finance 500 additional green affordable homes – and fresh starts.



Visit [www.enterprisecommunity.org](http://www.enterprisecommunity.org) or [www.enterprisecommunity.com](http://www.enterprisecommunity.com) for more information.

*Enterprise Community Partners, Inc. is a nonprofit organization. Enterprise Community Investment, Inc. is a for-profit company. "Enterprise" is used to reflect the work of both organizations as they share the same mission of creating decent, affordable housing and diverse, thriving communities.*